

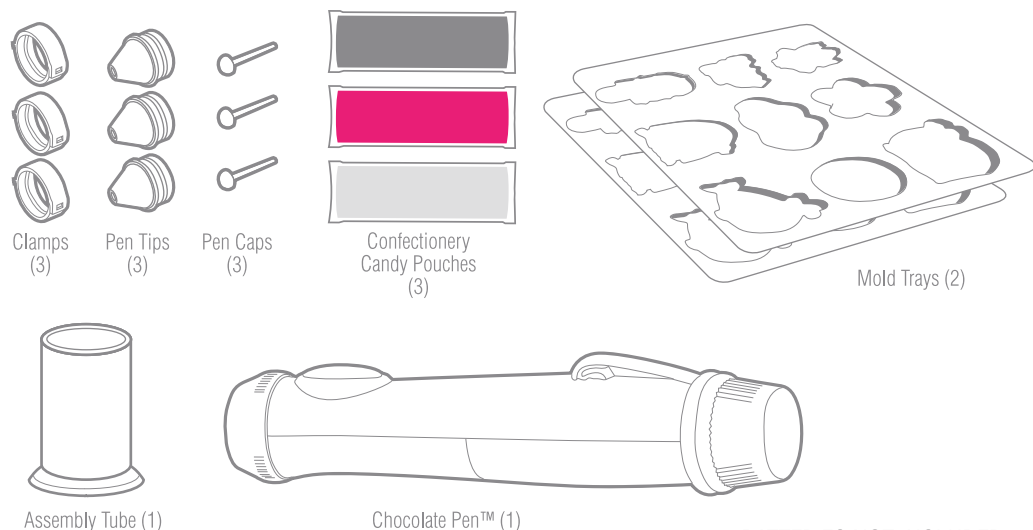


Chocolate Pen™

6+

Decorating Set
Instructions

For Video
Instructions
& Baking Tips
Visit:
RealCookingKids.com



BATTERIES NOT INCLUDED

NOTE: If packaging or Confectioner's Candy is damaged, please do not use. Please contact customer service for replacement.

- Adult supervision & participation is required.
- Please retain all packaging & instructions for future reference. They contain valuable product information.
- Remove all packaging before giving this product to a child.
- An adult should check toy to ensure there is no damage.

STOP: READ THIS BEFORE USING YOUR CHOCOLATE PEN.™

The Chocolate Pen™ requires adult assembly. To ensure the best experience, it's advisable to prep the pen before use.

Assemble the tools you'll need to enjoy your Chocolate Pen™:

- 2 AAA Batteries
- Small Phillips Head Screwdriver
- Scissors
- Large Bowl
- 4 Mugs or Cups (for hot water)
- Wax or Parchment Paper

WARNING:
CHOKING HAZARD-Small parts.
Not for children under 3 years.

01752 Contains Milk and Soy.

Conforms to product safety standards ASTM F963. Not suitable for children under 3 years due to small parts.



@RealCookingKids
www.RealCookingKids.com

SKYROCKET®

IMPORTANT INFORMATION

- Use Chocolate Pen™ as instructed.
- Wash hands before use.
- Wash all parts by hand thoroughly before use, refer to cleaning information.
- Do not let water touch the confectionery candy, as this will prevent hardening.
- Adult should supervise melting the confectionery candy and pen use.
- Have adult check the temperature of water before melting confectionery candy.
- Do not heat confectionery candy in a microwave or an oven.
- Do not heat any components in a microwave or an oven.
- Melted confectionery candy will be HOT. Avoid contact with skin.
- Avoid getting confectionery candy in eyes. Rinse eyes with water and seek medical attention if necessary.
- Confectionery candy might stain clothing, furniture, or carpeting, please use with caution when using the pen.
- Store in cool dry place.
- Store homemade pen "treats" in a sealed container, or re-sealable plastic bag.

CLEANING

- DO NOT SUBMERGE PEN, PEN DOOR OR LOCKING RING IN WATER.
- Wash all parts with damp sponge and mild soap before use.
- Do not use harsh chemicals to clean pen.
- Do not wash in dishwasher.
- Make sure pen and all components are completely dry before using.
- Remove locking ring and open door. Remove and discard pouch, tip, cap, and clamp after use. These are not meant to be re-used.

- Results will vary from product images depending on age and skill level.
- Confectionery candy pouches inside not labeled for retail sale.
- Toy parts made and assembled in China.
- Confectionery candy made in the USA.

The information presented in these instructions are believed to be currently accurate and reliable; however no warranty, either express or implied, is made. Any recommendations or suggestions are made without warranty or guarantee, since among other reasons, the conditions of storage and use are beyond our control.



Visit RealCookingKids.com for fun, helpful videos.

Learn how to pipe frosting, decorate and more!

Watch
Online!

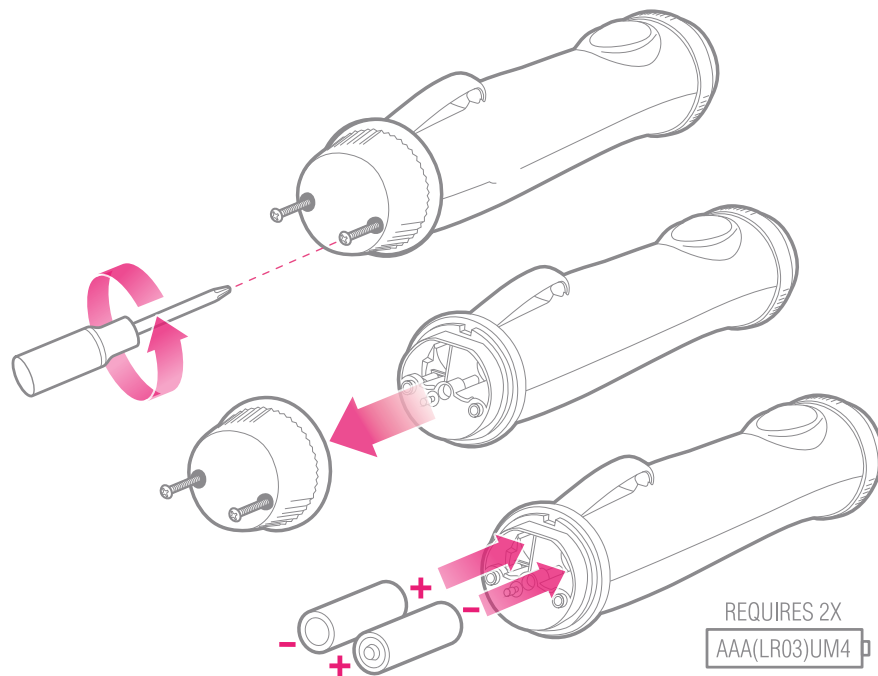
Questions or comments? Please call 888-674-5650

or email support@skyrockettoys.com SKYROCKET®

©2017 Skyrocket Toys LLC, Los Angeles, CA 90066 USA. All rights reserved. Real Cooking, Chocolate Pen and Skyrocket and their respective logos are trademarks and/or registered trademarks of Skyrocket Toys LLC. All other trademarks, logos and copyrights are the property of their respective owners, and there is no relationship express or implied with Skyrocket Toys LLC. MADE IN CHINA

Battery Installation

- Unscrew battery cover using a Phillips head screwdriver (not included).
- Install 2 new "AAA" (LR03) UM4 alkaline batteries in the orientation shown.
- Replace battery cover and tighten screws to close.



ALKALINE BATTERY CAUTIONS

- Do not use rechargeable batteries.
- Non-rechargeable batteries are not to be recharged.
- Different types of batteries or new and old batteries are not to be mixed.
- Batteries are to be inserted using correct polarity.
- Remove exhausted batteries as soon as possible and discard properly.
- Remove all batteries from compartment if toy is not used for a long period.
- The supply terminals are not to be short-circuited.
- Never throw batteries in a fire or attempt to open the outer casing.

WARNING: Batteries are harmful if swallowed. Please keep away from children.

Battery Disposal: Dispose of batteries according to the local laws and regulations of your region. Some batteries may be recycled, and may be accepted for disposal at your local recycling center. If you are not able to identify the applicable rules in your area, please check the instructions of the battery manufacturer.

ADULT SUPERVISION IS REQUIRED

Preparation

- 1 Have an ADULT place all pouches you intend to use in a large bowl of HOT water. Let pouches sit long enough for candy to melt completely (start checking pouch consistency after 3 minutes by kneading candy). Candy will be completely liquid when ready. Once pouch is COMPLETELY liquid, pat it dry with a towel.
 

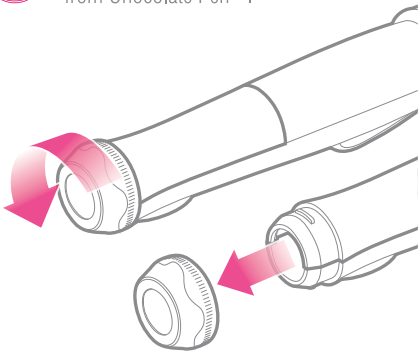
NOTE: Do not heat in microwave. Make sure water temperature will not burn.
- 2 Insert pouch upright into assembly tube. Grasp the top of the plastic pouch in one hand while you slide the melted candy down from top with the other hand.
 
- 3 Cut the top off plastic pouch in a STRAIGHT line, about 1" above candy.
 
- 4 Grasping seam of pouch in one hand, place pen tip just inside the pouch. Pinching the seam of the pouch, fold over the excess plastic onto itself so plastic is pulled tight around the tip.
 
- 5 Match back seam of clamp to the plastic seam of pouch where you just folded it over and close clamp. It's secure when you hear a click. Insert pen cap into the tip and place pouch upright in a mug of hot water.
 

IMPORTANT KEEP CANDY MELTED!

Pen will not properly function if candy is not thoroughly melted. If candy hardens in tip, it must be melted before it can be re-used. Keep the unused pouches upright in hot water, submerged to the top of the tip to prevent hardening. Be sure to seal tip with cap before submerging into water. Do not let water touch the candy. Contact with water will prevent finished treats from hardening.

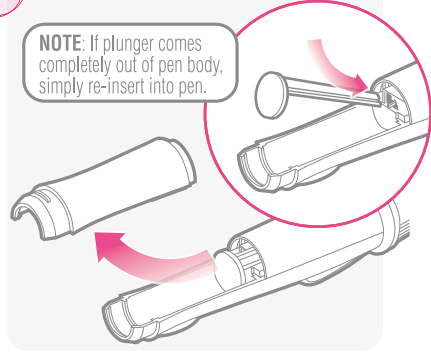
Preparation - Continued

- 6 Unscrew and remove the locking ring from Chocolate Pen™.

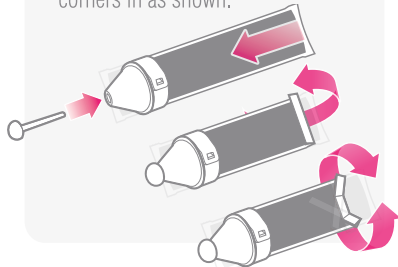


- 7 Remove the pen door.

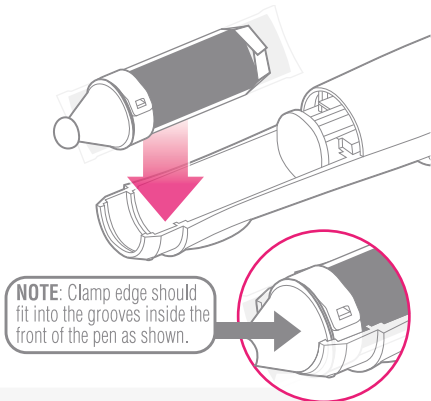
NOTE: If plunger comes completely out of pen body, simply re-insert into pen.



- 8 To ensure proper candy flow, squeeze contents up toward top of pouch to remove excess air. Insert pen cap into pen tip, roll excess pouch up and fold corners in as shown.

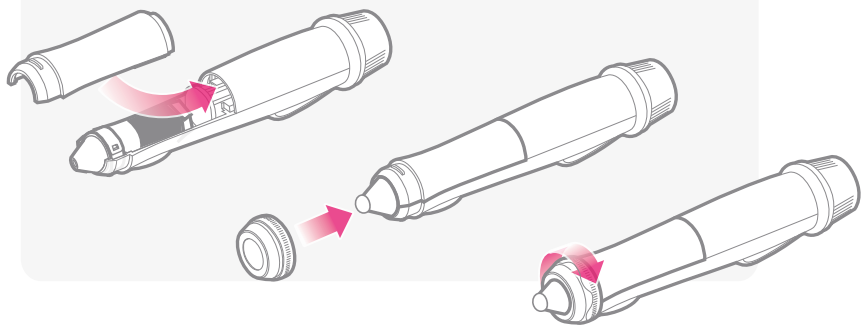


- 9 Insert the pouch into the pen.



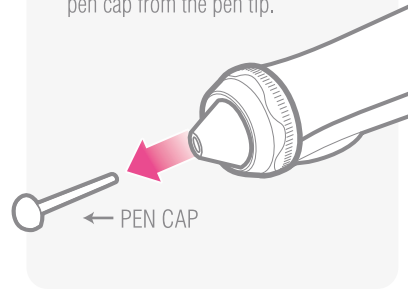
NOTE: Clamp edge should fit into the grooves inside the front of the pen as shown.

- 10 Replace the pen door and tighten the locking ring as shown. Be careful not to pinch sides of pouch when closing door.

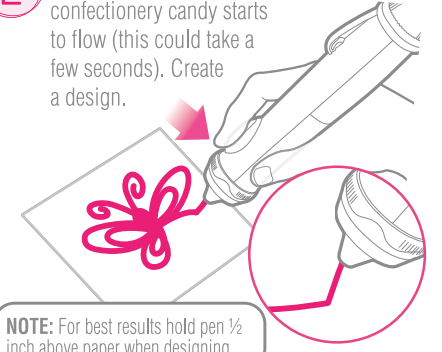


Drawing with Chocolate Pen™

- 1 Get a sheet of wax paper or parchment paper ready. Remove the pen cap from the pen tip.

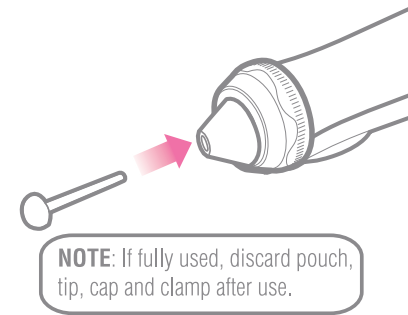


- 2 Press the button until the confectionery candy starts to flow (this could take a few seconds). Create a design.



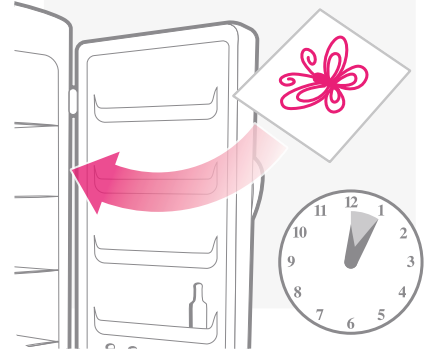
NOTE: For best results hold pen 1/2 inch above paper when designing.

- 3 Insert the pen cap into the pen tip.



NOTE: If fully used, discard pouch, tip, cap and clamp after use.

- 4 Place design in freezer and allow it to harden for about 5 minutes.



- 5 After design has hardened, carefully peel back paper from design as shown.

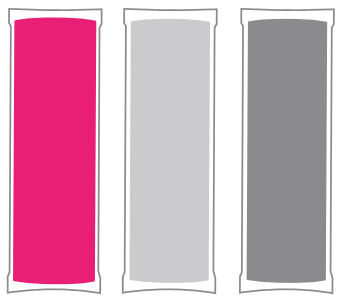


IMPORTANT STORING AND RE-USING POUCHES

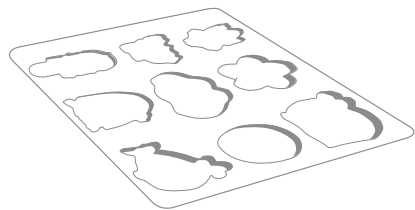
Partially used pouches can be stored and re-used between sessions. Insert the cap into the tip to seal. No refrigeration is required. When re-using, be sure to thoroughly melt the candy, including any hardened candy in the pen tip. Place pouch in HOT water and submerge to the top of the tip to ensure all candy is melted. Be sure to seal tip with cap before submerging into water.

Making Treats with Molds

- 1 Select the pouch colors you wish to use and follow steps 1-10 in preparation.

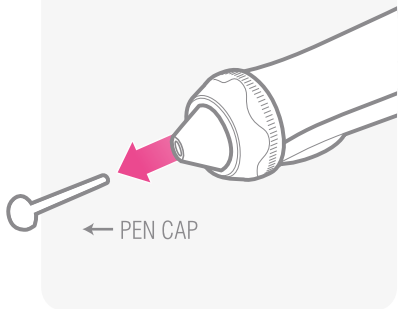


- 2 Select a mold tray.

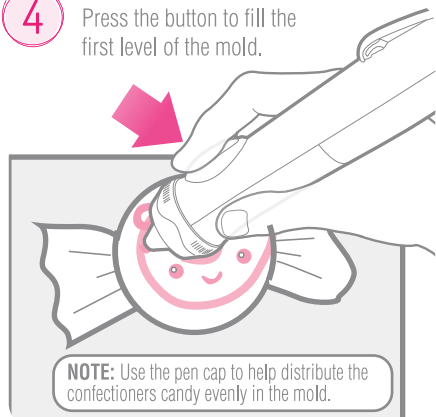


NOTE: Make sure to wash and dry mold trays thoroughly before use.

- 3 Remove the pen cap from the pen tip.

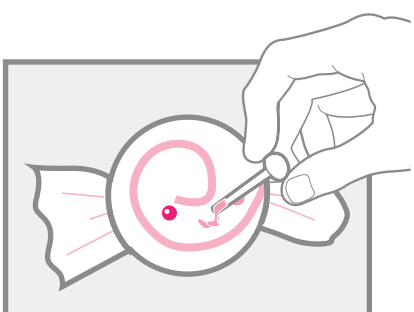


- 4 Press the button to fill the first level of the mold.

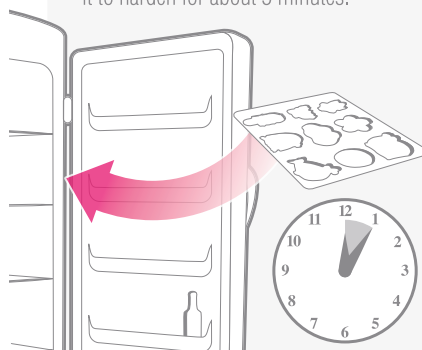


NOTE: Use the pen cap to help distribute the confectioners candy evenly in the mold.

- 5 Use pen cap to add fine details.

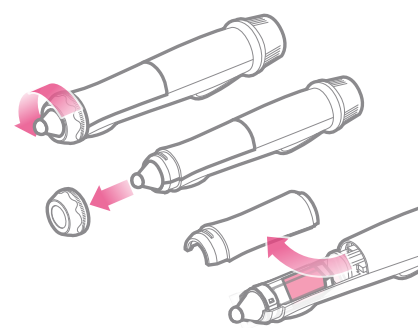


- 6 Place design in freezer and allow it to harden for about 5 minutes.

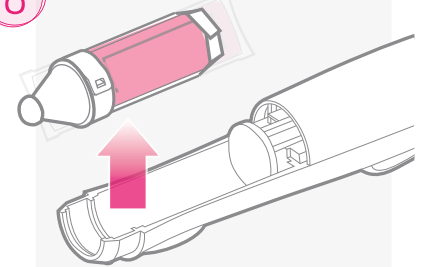


Making Treats with Molds - Continued

- 7 Unscrew the locking ring and remove the pen door.

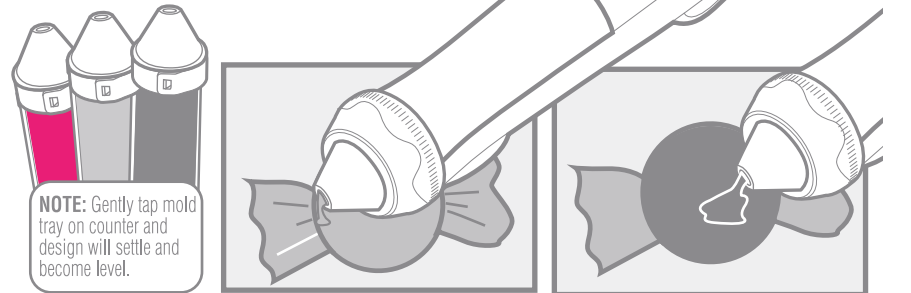


- 8 Remove the pouch from the pen.



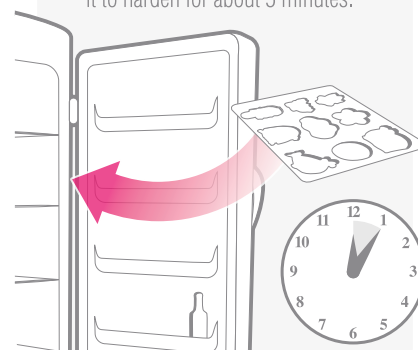
NOTE: You can store partially used candy for later use. When ready to re-use, place the pouch in HOT water until candy is thoroughly melted!

- 9 Repeat the process for each color until mold is full. Be sure to place mold in freezer between applications.

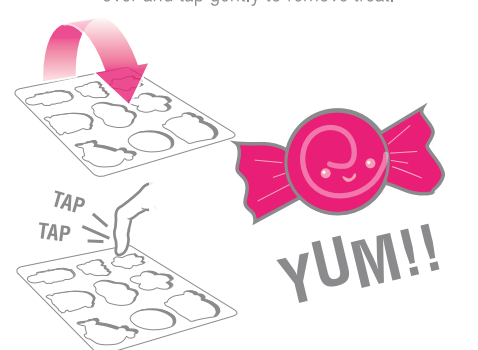


NOTE: Gently tap mold tray on counter and design will settle and become level.

- 10 Place design in freezer and allow it to harden for about 5 minutes.



- 11 When treat has hardened turn tray over and tap gently to remove treat.



YUM!!