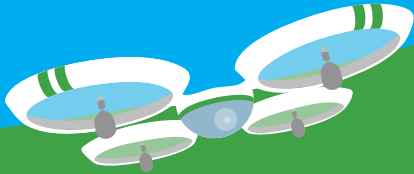


FLYING SAFELY



Know your surroundings

Some municipalities prohibit the operation of remote controlled aircraft within public spaces such as parks and school grounds. There are rules of the air you need to know. Always check with local authorities before you fly your drone.

Recreational or commercial use?

Using a drone in connection with a business is considered to be commercial use by the FAA. This includes but is not limited to:

- Real estate, wedding or other photography
- Inspection or survey services
- Film or television production

Visit faa.gov/uas for more information

Go to knowbeforeyoufly.org to stay up to date on how and when you can fly your drone.



Fly below 400 feet



Fly within visual line of sight



Avoid flying over groups of people and stadium events



Avoid flying near other aircraft



Never fly within 5 miles of an airport without contacting airport authorities and the airport's traffic control facility



Be aware of FAA airspace requirements faa.gov/go/uastfr



Keep well away from emergency response efforts such as fires



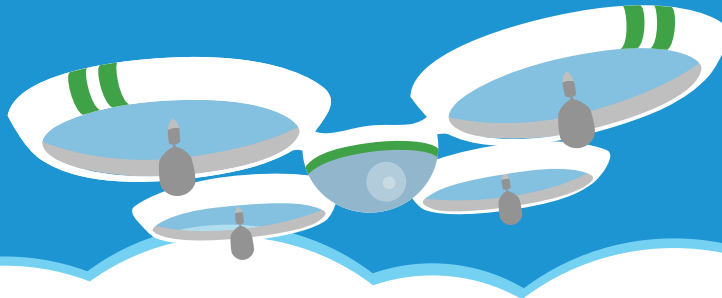
Do not fly under the influence



Know Before You Fly

is an educational campaign that provides drone users with the information and guidance they need to fly safely and responsibly.

Visit knowbeforeyoufly.org and faa.gov/uas or follow @FlyResponsibly and @FAANews on twitter for more information.



Federal Aviation
Administration

