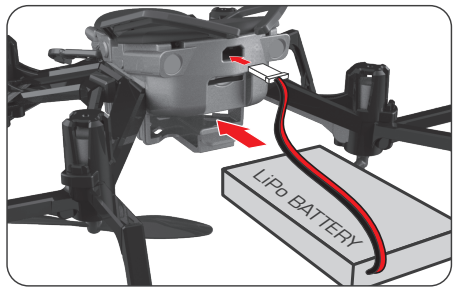
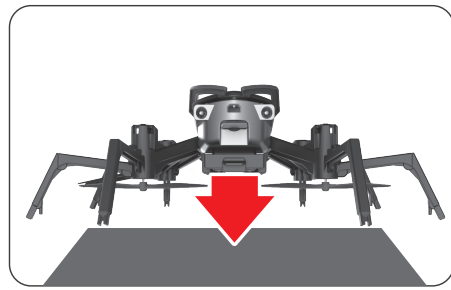


POWERING UP AND PAIRING



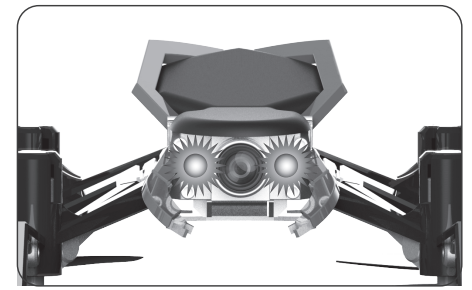
Insert fully charged LiPo battery into the underside of drone, then connect the battery to back of the drone.



Place the drone on flat level surface for calibration.



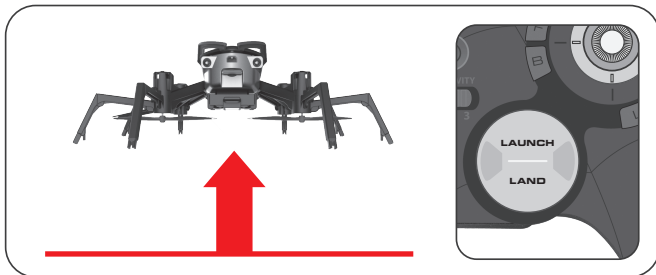
Turn on controller. (Before initial use, install new batteries into controller.)



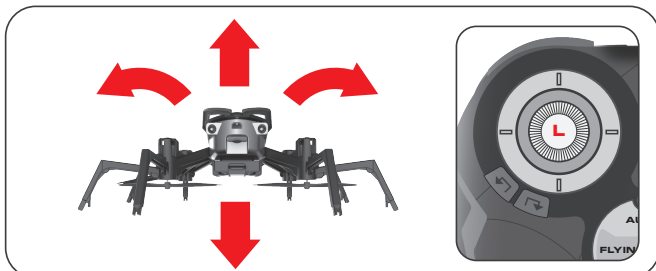
Remove plastic film from lens before use. Once lights turn solid, drone is ready to fly.

BASIC FLIGHT MANEUVERS

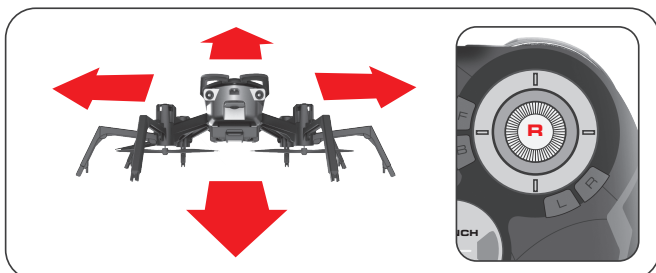
To make flying easier, place drone on ground in front of you with the drone facing away from you. You should be facing the same way the drone is facing.



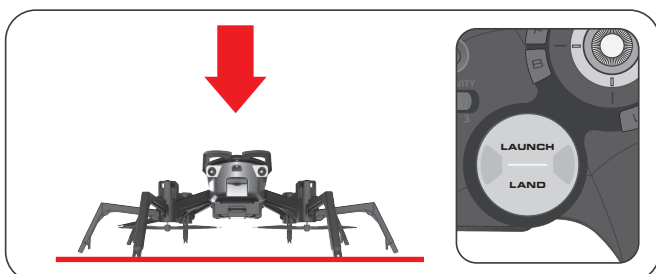
Press **LAUNCH** to automatically launch a few feet off the ground.



Move **LEFT (Throttle)** thumbstick up or down to make drone fly higher or lower and left or right to rotate.



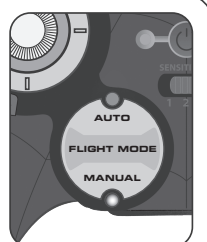
Use **RIGHT (Directional)** thumbstick to fly forward, backward, left or right.



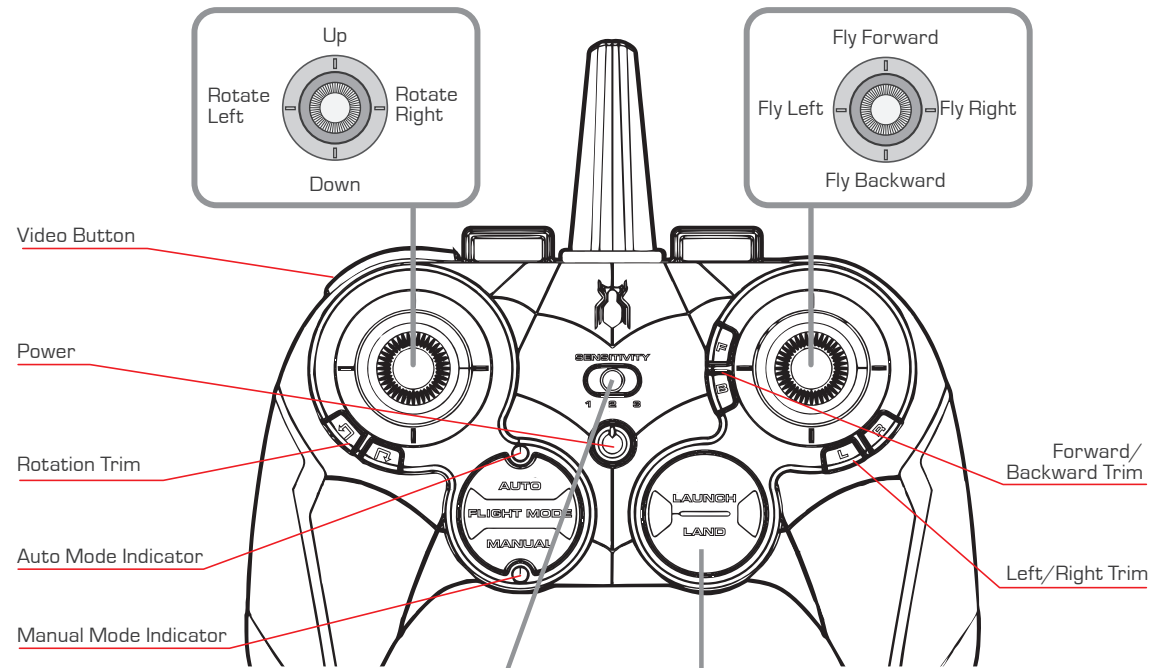
Press **LAND** to automatically land.

AUTO AND MANUAL FLIGHT MODES

Press the **FLIGHT MODE** button to switch between **AUTO** and **MANUAL** modes. **MANUAL** mode gives you precise throttle control allowing for more advanced maneuvers.



FLIGHT CONTROLS

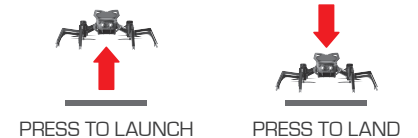


FLIGHT SENSITIVITY SWITCH



It is best to start with **LOW** sensitivity until you master flying.

LAUNCH/LAND BUTTON



• Reset controller to factory settings: Hold F Trim, B Trim, and Power for 3 seconds.

• Toggle audio on/off: Hold and Power for 1 second.

• Reset drone WiFi password: Hold L Trim, R Trim and Power for 3 seconds. (Controller and drone must be paired).

STREAMING AND RECORDING VIDEO

LIVE STREAMING AND RECORDING

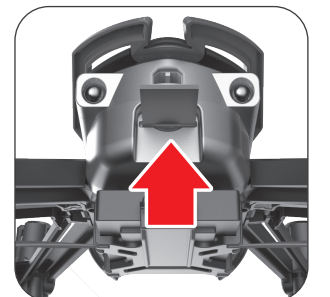
Download the **SPIDER-DRONE** app from the App Store or Google Play. Follow the instructions in the app to stream and/or record video and take photos.



RECORDING HIGHER QUALITY VIDEO TO MICRO SD CARD

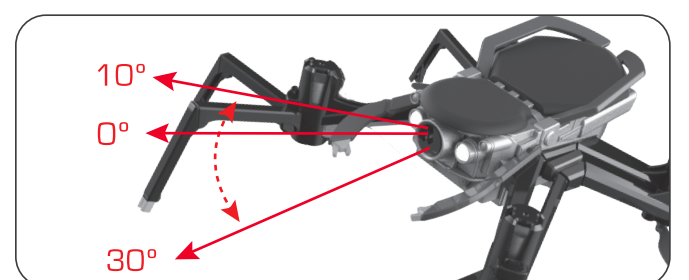
(MICRO SD CARD SOLD SEPARATELY)

To record video in 720p insert Micro SD card (sold separately) into the back of drone. Follow the instructions in the app to toggle recording to your mobile device or your Micro SD card. Record directly to the Micro SD card without the app by using the button on the controller.

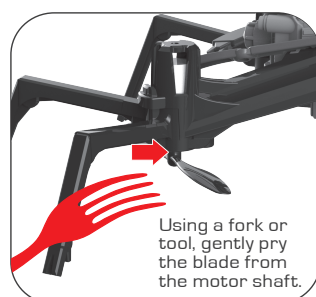


ADJUSTABLE CAMERA ANGLE

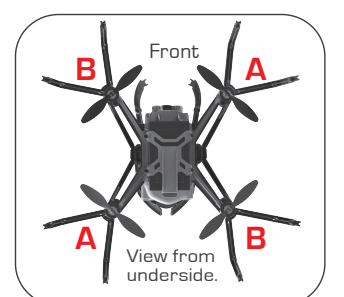
The drone camera angle is adjustable to suit your preference. Recommended position is pointing slightly downward.



REPLACING DAMAGED BLADES



Using a fork or tool, gently pry the blade from the motor shaft.



Online Video Instructions & Flying Tips available now at **SKYVIPER.COM**

CONTENTS

- Streaming Video Spider-Drone
- USB Charging Cable
- Rechargeable 3.7V 850mAh LiPo Battery
- Controller
- 4 Replacement Blades
- Phone Mount

BATTERY UPGRADE

Double your flying time with an additional battery!

Details of how to purchase additional or replacement battery packs available at SKYVIPER.COM



#01739

SKY VIPER FLIGHT SIMULATOR

Learn and practice maneuvers on your phone, then apply your new skills in real life.

- Download the Sky Viper Flight Simulator app for free!
- Auto & Manual Flight Modes
- Practice & Challenge Simulations
- 1st and 3rd Person Views
- Choose from the entire Sky Viper fleet



WE'RE HERE TO HELP

For questions about this product:

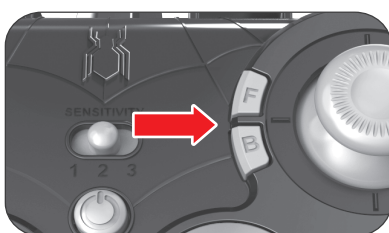
Online:
skyviper.com/support

Email:
support@skyrockettoys.com

Phone:
1-888-674-5650
M-F 9am to 6pm PST

Online Video Instructions & Flying Tips available now at SKYVIPER.COM

TRIM ADJUSTMENTS



IF DRONE DRIFTS FORWARD: Press "B" button several times until drone stops drifting forward.
IF DRONE DRIFTS BACKWARD: Press "F" button several times until drone stops drifting backward.



IF DRONE DRIFTS LEFT: Press "R" button several times until drone stops drifting left.
DRONE DRIFTS RIGHT: Press "L" button several times until drone stops drifting right.



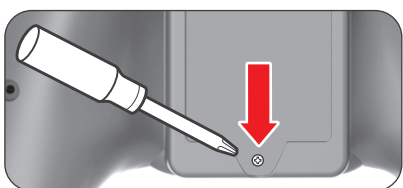
IF DRONE SPINS COUNTER-CLOCKWISE (VIEWED FROM ABOVE): Press the button several times until drone stops spinning.
IF DRONE SPINS CLOCKWISE (VIEWED FROM ABOVE): Press the button several times until drone stops spinning.

TIPS:

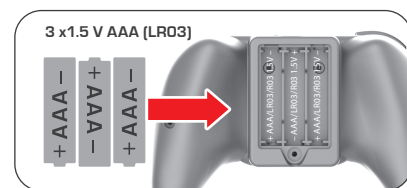
#1: When the controller LED flashes 3 times quickly, the trim is at middle of trim range.

#2: If you are uncomfortable trimming the drone in flight, you can land onto a flat surface and make your trim adjustments.

INSTALLING BATTERIES IN THE CONTROLLER



*Screwdriver not included.



*Batteries not included.

ADULT SUPERVISION REQUIRED

Before each use, an adult should check this product and the LiPo battery to ensure no damage or hazards exist. Drone has rotating blades that move at high speed, posing danger of damage and injury. Pilots are responsible for any actions that result in damage or injury from the improper operation of drone. Adequate flying space is required. Avoid flying near interior fans and/or vents as they may make flying difficult to control. Keep a safe distance away from streets, public thoroughfares and power lines. Never attempt to retrieve drone from any location higher than your reach (such as rooftops or trees) or from any location that poses a safety hazard. Never fly drone at night. Keep drone in sight at all times during operation. Discontinue operation immediately if drone flies out of your field of view. Do not fly near spectators or animals. Keep spinning rotors away from fingers, hair, eyes and other body parts. Always launch from a flat surface. Never leave drone unattended while it is turned on. Read all enclosed information before operating.

THIS PRODUCT CONTAINS A LITHIUM-POLYMER BATTERY 3.7V 850mAh:

LiPo batteries have a severe risk of fire and injury if they are improperly handled or misused. They may explode, overheat or ignite. Read all following precautions and instructions regarding the care and use of LiPo batteries.

The LiPo battery is only to be used with the drone and charger included with this product.

- Keep away from flammable materials.
- Do not expose to direct sunlight.
- Do not place in fire or leave in hot places.
- Do not drop or make subject to strong impact.
- Keep dry and away from water.
- Remove exhausted battery as soon as possible and discard properly.
- Remove battery from the compartment if toy is not used for a long period of time.
- The supply terminals are not to be short circuited.
- Never throw battery in a fire or attempt to open outer casing.
- Do not leave battery connected to drone when not in use.

LiPo Battery Disposal: LiPo batteries must be recycled or disposed of properly. They should not be disposed of with other household waste. Check your local laws and regulations for correct recycling and/or battery disposal.

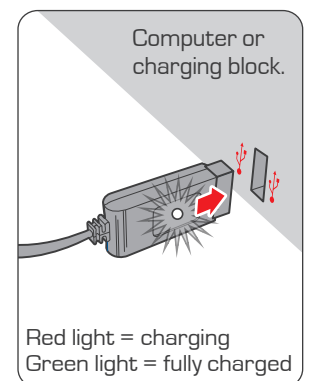
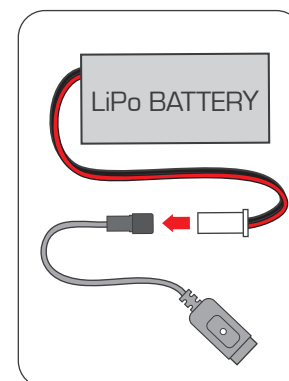
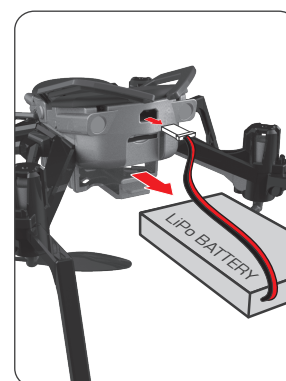
AAA BATTERY CAUTIONS

- Do not use rechargeable batteries.
- Different types of batteries or new and old batteries are not to be mixed.
- Batteries are to be inserted using correct polarity.
- Remove exhausted batteries as soon as possible and discard properly.
- Remove all batteries from compartment if toy is not used for a long period of time.
- Never throw batteries in a fire or attempt to open the outer casing.
- Non-rechargeable batteries are not to be recharged.
- The supply terminals are not to be short circuited.
- Batteries should be replaced by an adult.

WARNING: Batteries are harmful if swallowed. Please keep away from children.

Battery Disposal: Dispose of batteries according to the local laws and regulations of your region. Some batteries may be recycled, and may be accepted for disposal at your local recycling center. If you are not able to identify the applicable rules in your area, please check the instructions of the battery manufacturer.

CHARGING THE LIPO BATTERY



CHARGING PRECAUTIONS:

- After use, allow drone (battery on bottom) to cool down to room temperature before charging again.
- Charge battery in an isolated area, away from excessive heat or moisture.
- If you suspect that the battery is damaged or swelling, discard the battery in accordance with your country's recycling laws.
- Do not modify, heat, or wet the battery in any way. Only recharge with provided charger.

This device complies with PART 15 of the FCC Rules. Operation is subject to the following two conditions. (1) This device may not cause harmful interference, and (2) this device must accept any interference received, including interference that may cause undesired operation.

CAUTION: Changes or modifications to this unit not expressly approved by the party responsible for compliance could void the user's authority to operate the equipment.

NOTE: This equipment has been tested and found to comply with the limits for a Class B digital device, pursuant to Part 15 of the FCC Rules. These limits are designed to provide reasonable protection against harmful interference in a residential installation. This equipment generates, uses and can radiate radio frequency energy and, if not installed and used in accordance with the instructions, may cause harmful interference to radio communications. However, there is no guarantee that interference will not occur in a particular installation. If this equipment does cause harmful interference to radio or television reception, which can be determined by turning the equipment off and on, the user is encouraged to try to correct the interference by one or more of the following measures: Reorient or relocate the receiving antenna - Increase the separation between the equipment and receiver - Connect the equipment into an outlet on a circuit different from that to which the receiver is connected - Consult the dealer or an experienced radio/TV technician for help.

Remove all packaging attachments before giving the toy to a child.

Not suitable for children under 3 years due to small parts that could be swallowed.

Conforms to product safety standards ASTM F963.

Keep instructions for future reference. Do not discard.



©2017 Skyrocket Toys LLC, Los Angeles CA 90066 USA. All Rights Reserved. Sky Viper and Skyrocket and their respective logos are trademarks and/or registered trademarks of Skyrocket Toys LLC. All other trademarks, logos and copyrights are the property of their respective owners, and there is no relationship express or implied with Skyrocket Toys LLC.

MADE IN CHINA.



Google Play and the Google Play logo are trademarks of Google Inc.

Apple and the Apple logo are trademarks of Apple Inc., registered in the U.S. and other countries. App Store is a service mark of Apple Inc., registered in the U.S. and other countries.

The software included in this product contains copyrighted software that is licensed under the GPLv3. A copy of that license is included in our website at the URL below. You may obtain the complete Corresponding Source code from us for a period of three years after our last shipment of this product and/or spare parts therefor, which will be no earlier than 05-01-2019, on our website at <http://www.skyrockettoys.com/GPL/>