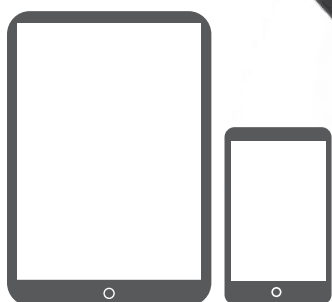


mēbo^{2.0}

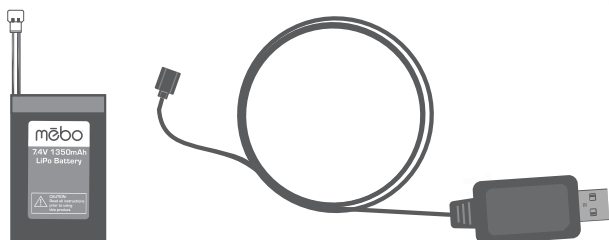
AGES 8+



SMART PHONE OR TABLET
REQUIRED (NOT INCLUDED).

SYSTEM REQUIREMENTS:
Works with most Apple iOS
and Android Devices, Wi-Fi Connection.

CONTENTS: MEBO ROBOT,
LIPO BATTERY & CHARGER



IMPORTANT

- Adult supervision is required for charging LiPo battery.
- After use, allow battery to cool down to room temperature before charging again.
- Charge battery in an isolated area, away from excessive heat or moisture.
- If you suspect battery is damaged, discontinue use immediately and discard according to local regulations.
- Do not modify, heat or wet the battery in any way.
- Only recharge with the charger provided.

#MeboSpyBot

Hop online and check out
what Mebo's been up to!

www.MeboRobot.com



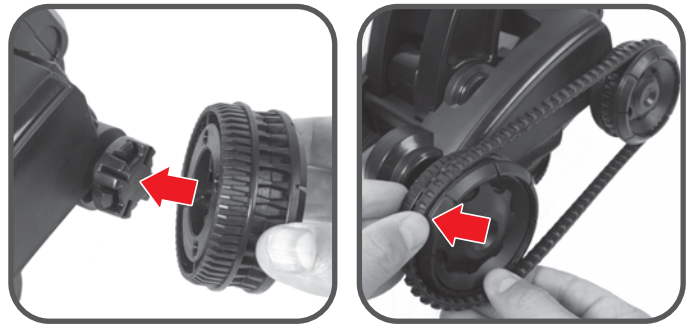
01750-G1

GETTING STARTED

1. ATTACH MEBO'S WHEELS

Mebo's wheels must be attached before use.

- Carefully align the grooves on the wheels with the slots on the wheel hubs and snap into place. (The bigger wheels go in front)
- Pull the treads over one wheel at a time.



2. CHARGING MEBO'S BATTERY

- Plug battery into USB Charger.
- Plug USB Charger into USB port (Not included).
- Charge until battery is completely charged. (Light on charger will turn green when fully charged.)
- Unplug battery from charger and charger from USB port.

3. INSTALLING MEBO'S BATTERY

- Open the battery compartment on the back of Mebo.
- Plug the battery into the enclosed connector. Rest the battery inside and close the compartment door.

4. DOWNLOAD THE MEBO APP

- Download the MEBO app and install onto your smart phone or tablet.



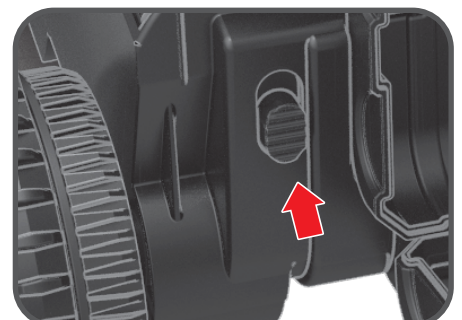
5. TURN MEBO ON

- Flip the power switch, on the back of Mebo, to turn on. Mebo will light up and flash when turned on.

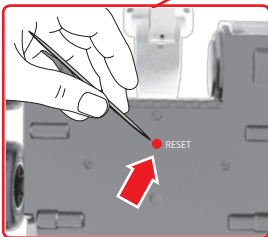
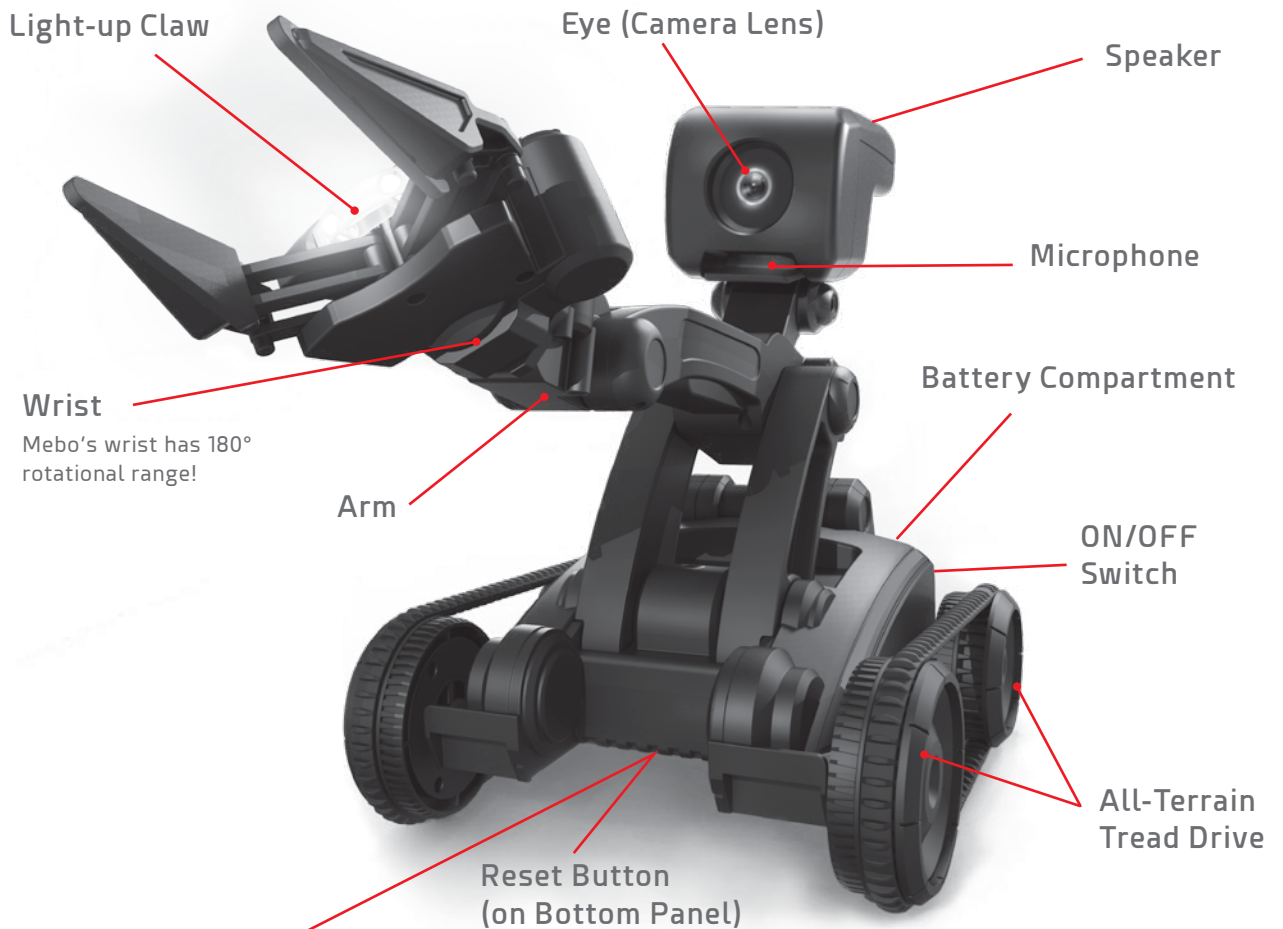


6. CONNECT WITH YOUR SMART DEVICE

- Enable the Wi-Fi on your phone or tablet and select **MEBO2-xx-xx-xx** (name of connection may differ slightly from this example on your Wi-Fi network list).
- Mebo will stop flashing when successfully connected to Wi-Fi and the app.
- Once connected please follow in-app instructions.



MEBO SPECS



RESET MEBO'S WI-FI CONNECTION

- If Mebo is unresponsive, you may need to press **RESET** to clear and reset Mebo.
 - **RESET** can also be used to clear a Wi-Fi password if you have forgotten it.
 - Use a pin or unfolded paperclip to press the **RESET** button and hold for 5 seconds.
- Note: **RESET** will calibrate all motors and wheels will move, so watch your fingers.

TROUBLESHOOTING

For more troubleshooting and tips, visit www.MeboRobot.com

PROBLEM	SOLUTION
Mebo is not responding	<ul style="list-style-type: none"> • Ensure battery is charged and properly plugged into connector. • Check to see if Wi-Fi is enabled on your smart device. • Mebo may be out of Wi-Fi range.
Mebo's part(s) aren't moving	<ul style="list-style-type: none"> • Inspect MEBO's joints, claw and wheels for foreign objects.
Unable to connect to Mebo through WiFi	<ul style="list-style-type: none"> • If after several attempts you are unable to connect to Mebo through your device's Wi-Fi, press RESET for 5 seconds on the underside of Mebo using the tip of a pin. After reset, try connecting again.

WARNING

- This product is intended primarily for indoor use or on surfaces clear of dirt or water.
- Do not immerse the product in water as this is hazardous and can cause product to malfunction.
- Keep fingers and hands away from all moving parts and joints including arm and wheels.
- Keep the camera clean, and wipe with a lint-free cloth.
- Remove battery when not in use for long periods, it can reduce the life span and performance of the battery.
- When charger is not in use, disconnect it from the power source.
- Do not leave the battery connected to charger for longer than one day. Overcharging may shorten battery life.
- If left unused a fully charged battery will discharge itself over time.
- Charging time may vary.
- Use under adult supervision only. Do not use if there is any visible damage to the cord, housing or other moveable parts.

THIS PRODUCT CONTAINS A LITHIUM-POLYMER BATTERY 7.4V 1350mAh:

- LiPo batteries have a severe risk of fire and injury if they are improperly handled or misused. They may explode, overheat or ignite.
- Read all following precautions and instructions regarding the care and use of LiPo batteries.
- The built-in LiPo battery is only to be used with the toy and charger included with this product.
- Keep away from flammable materials.
- Do not expose to direct sunlight.
- Do not place in fires or leave in hot places.
- Do not drop or make subject to strong impact.
- Keep dry and away from water.
- Remove battery from the compartment if toy is not used for a long period.
- The supply terminals are not to be short circuited.
- Never throw batteries in a fire or attempt to open outer casing.
- LiPo Battery Disposal: LiPo batteries must be recycled or disposed of properly. They should not be disposed of with other household waste.
- Check your local laws and regulations for correct recycling and/or battery disposal.

This device complies with PART 15 of the FCC Rules. Operation is subject to the following two conditions. (1) This device may not cause harmful interference, and (2) this device must accept any interference received, including interference that may cause undesired operation.

CAUTION

- Changes or modifications to this unit not expressly approved by the party responsible for compliance could void the user's authority to operate the equipment.
- To prevent axles from binding, do not drive over loose hair or shag carpeting.

NOTE: This equipment has been tested and found to comply with the limits for a Class B digital device, pursuant to Part 15 of the FCC Rules. These limits are designed to provide reasonable protection against harmful interference in a residential installation. This equipment generates, uses and can radiate radio frequency energy and, if not installed and used in accordance with the instructions, may cause harmful interference to radio communications. However, there is no guarantee that interference will not occur in a particular installation. If this equipment does cause harmful interference to radio or television reception, which can be determined by turning the equipment off and on, the user is encouraged to try to correct the interference by one or more of the following measures: Reorient or relocate the receiving antenna - Increase the separation between the equipment and receiver - Connect the equipment into an outlet on a circuit different from that to which the receiver is connected - Consult the dealer or an experienced radio/TV technician for help.

©2017 Skyrocket LLC, Los Angeles CA 90066 USA. All Rights Reserved. Mebo and Skyrocket and their respective logos are trademarks and/or registered trademarks of Skyrocket LLC. All other trademarks, logos and copyrights are the property of their respective owners, and there is no relationship express or implied with Skyrocket LLC. MADE IN CHINA.
Remove all packaging attachments before giving the toy to a child. Not suitable for children under 3 years due to small parts that could be swallowed. Conforms to product safety standards ASTM F963. Keep instructions for future reference. Do not discard.

Proudly built with open source code. Visit <http://www.skyrocketon.com/open-source/> for more details.

Apple and the Apple logo are trademarks of Apple Inc., registered in the U.S. and other countries. App Store is a service mark of Apple Inc.

Google Play is a trademark of Google Inc.

SKYROCKET

Questions or comments?
Please call 888-674-5650
or visit www.MeboRobot.com

